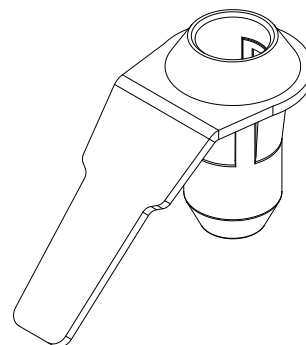
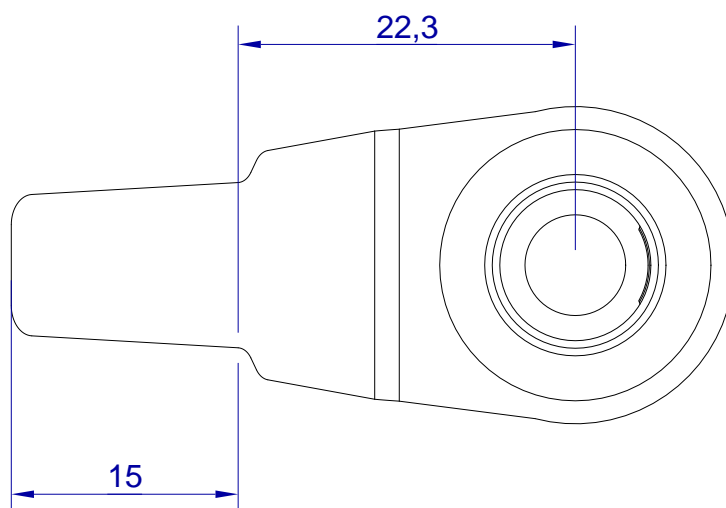


Technical drawing of a mechanical part, likely a bracket or support. The drawing shows a side view with the following dimensions:

- A horizontal dimension of  $\varnothing 12$  (12 mm diameter) at the top.
- A vertical dimension of 24,3 on the left side.
- A vertical dimension of 30 on the right side.
- An angle of  $135^\circ$  indicated between the horizontal reference line and the angled section.

hang<sup>®</sup>  
On

Description
Assembled masking and hanging, M10 axle Rusty

2025-09-15 10:13